



## Innovative, versatile and efficient

Intelligent data communication with  
system technology from Sontex.

 **Sontex**

# Something you can rely upon

The Sontex radio system Supercom is a complete solution for customer friendly and precise reading of consumption values and other data from wireless devices: offering an optimal cost-benefit ratio for installations of any size, total flexibility and data security.



### Easy to use

The system technology devices are quickly set up. The use of standard protocols allows for an easy integration in a variety of accounting software and other data collections systems.



### Proprietary

The radio system operates in its standard version at a frequency of 433 MHz and a proprietary radio protocol from Sontex. The devices transmit only when requested to do so and can be parametrized via radio.



### Anytime

Thanks to the Sontex radio solutions all devices are reachable 365 days a year and, thus, can be read and configured at any time.



### Scalable

Start with a cost effective walk-by solution and expand as you wish afterwards. The enhanced system takes over historical data easily.



### Discreet

Consumption data are securely and promptly available while respecting the right to privacy. Likewise, transmission of additional information as manipulations or statistical data.



### Multi-platform

Wired or wireless, SONTEx Radio, OMS or LoRa, GSM/GPRS, 3G or 4G, Ethernet, Bluetooth or WiFi, or any other new protocol in definition phase? With Supercom the most different configurations are possible.

# The perfect view

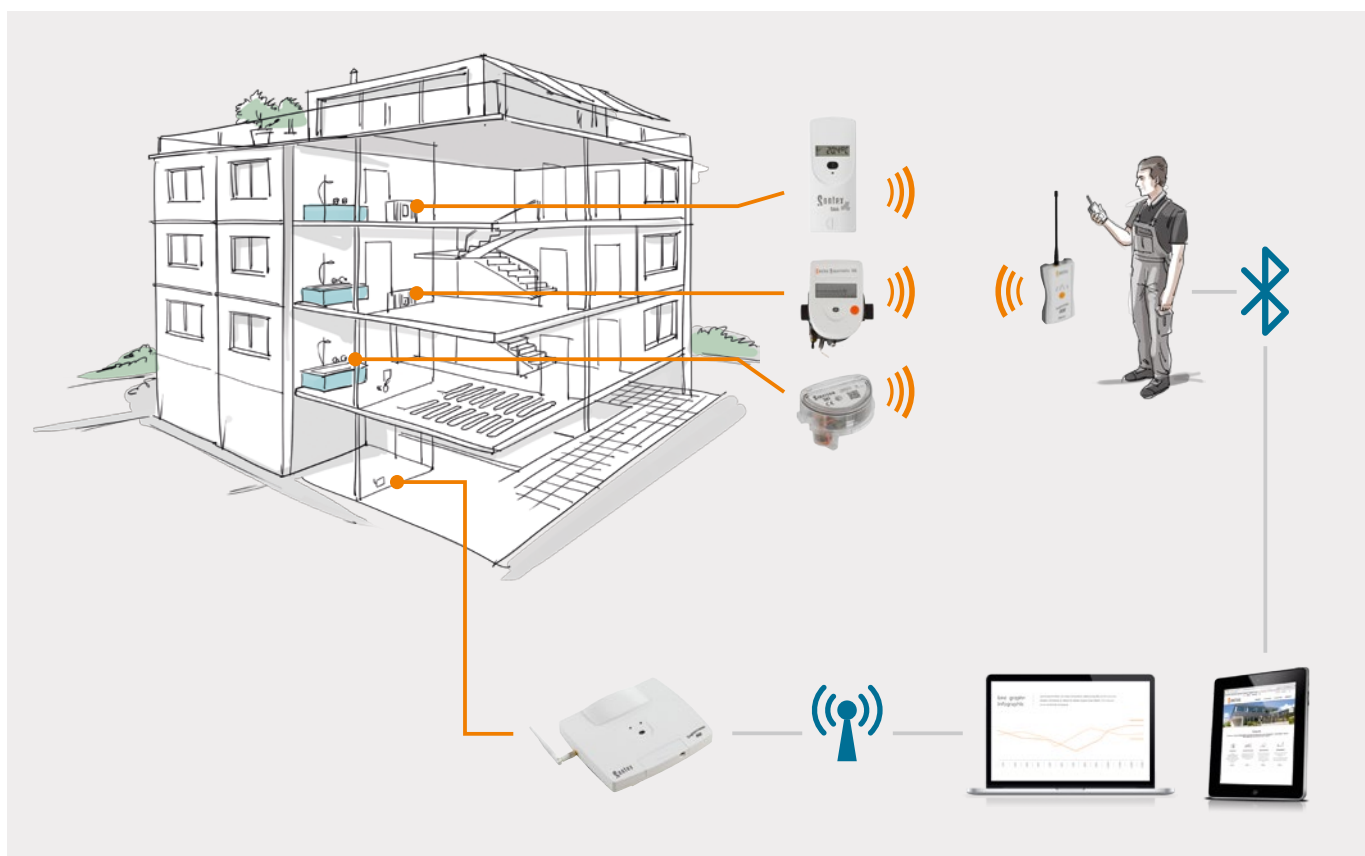
## Supercom system components offer you the complete solution for the remote radio readout of consumption data.

With the radio modem Supercom 636 having a Bluetooth-interface you get a fast and economically attractive walk-by solution for the radio readout by means of a mobile device.

The concentrator Supercom 646 collects radio data from up to 1,000 devices – heat cost allocators, heat meters and radio modules. It can be read out via a local M-Bus interface or via GSM/GPRS, 3G or 4G.

The repeater Supercom 656 completes the portfolio and allows data collection in difficult buildings causing reduced reach.

Sontex also offers the same components – radio modem, concentrator and repeater – compliant to wM-Bus according to the OMS Standard, for devices that send their data in this standardized format. The Software Tools Supercom supports both.







*“Medium term we are striving for totally open systems and solutions, which are also freely configurable for new emerging technologies.”*

*Milan Fischer, Team leader New Technologies*