

Supercom 281 Water Meter with Integrated Radio Module



Application

The MID approved water meter **Supercom 281** is especially suitable for installation in rented apartments. The radio is already integrated, a subsequent adjustment with the water meter is not necessary. Due to its compact design, the radio module cannot be removed, manipulation is excluded.

The data are conveniently readable remotely; the Sontex radio system guarantees a secure and reliable data transmission. The data are then available for further evaluation and invoicing.

Function

The battery powered water meter with radio module **Supercom 281** scans the volume pulses forward as well as backwards and stores the consumed water volume of up to 15 monthly values. The read-out devices for the Walk-by readout Supercom 636 or the concentrator Supercom 646 can be used to read the stored data via the bi-directional SONTEX wireless connection within the range.

Programming Data

The following parameters can be programmed by radio with the software Tools Supercom:

- Date and time
- Password for the secured access to the programming
- Set day and volume at set day

Stored Data

The following parameters can be read out by radio with the software Tools Supercom:

- Identification number
- Medium: cold or warm water
- Current time and date
- Accumulated volume
- Set day and accumulated volume at set day
- 15 monthly values
- Operating hours of battery

Reachability

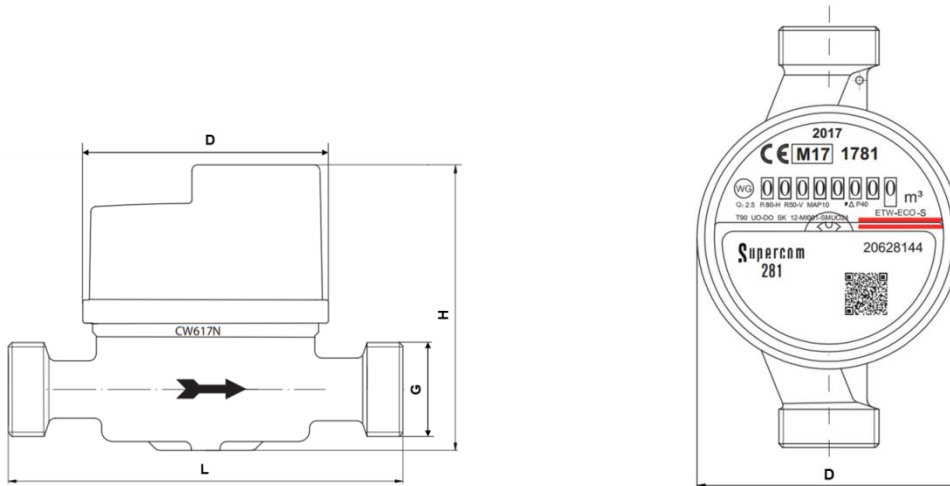
Reading of the water meter by radio from 6h00 to 20h00 on 7 days a week

Conformity



acc. to RED 2014/53/EU

Dimensional Drawing (e.g. warm water meter)



Technical Data

Length [mm] - <i>L</i>	80	110	130
Permanent flow rate Q_3 [m ³ /h] (MID)	2,5	2,5	4,0
Measuring range Q_3/Q_1 [R]	80H / 50V		
Temperature class	cold T50 / warm T90		
Operating temperature	5 - 55°C		
Storage temperature	-20 - 70°C		
Protection class	IP68		
Thread - <i>G</i>	1/2"	1/2"	3/4"
Counter diameter [mm] - <i>D</i>	69	69	69
Weight [kg]	0,41	0,46	0,55
Height [mm] - <i>H</i>	80,5	80,5	80,5

Radio

Method: FSK, bidirectional
 Frequency: 433,82 MHz
 Protocol: Radian, EN60870-5 (M-Bus)

Electrical Data

Main supply: 3 V Lithium Battery (< 1g)
 Service life: Maximum 7 (6 + 1) years at one reading per week

Technical Support

For technical support contact your **local Sontex agent** or Sontex SA directly.

Sontex-Support

E-mail: support@sontex.ch
 Phone: +41 32 488 30 04

Modifications subject to change without notice.
 © Sontex SA 2017