



Relevant data, anytime

With Sontex radio modules
always up to date.

Sontex

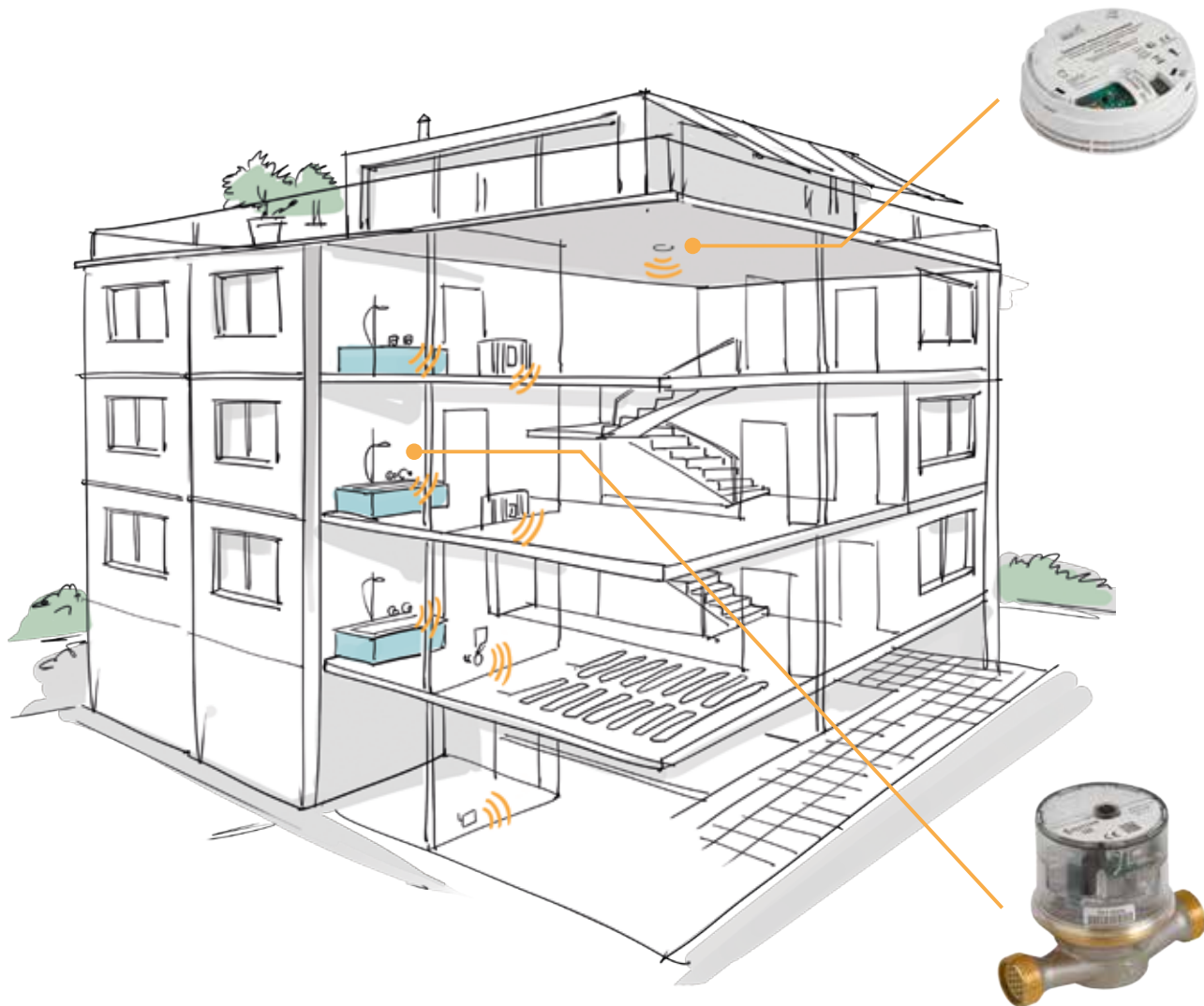
The perfect complement

Sontex is continuously enhancing its product range and supports innovative networking of home automation devices.

Radio modules complete Sontex' product portfolio. They ideally complement, for example, our wireless-enabled heat cost allocators and can obviously be read using the same devices.

Radio modules can easily be retrofitted to existing installations, as to water meters or smoke detectors. Immediately all relevant data can be read out re-

motely. Thus, we provide transparency and reliability in home and building automation and in system technology. Monitoring and coordinating these systems are the basis of modern building automation. Sontex increases your convenience. The great flexibility and broad product range make Sontex the preferred partner of building managers and providers.



Upgrade – at any time

Sontex battery-powered radio modules record, store and transmit consumption rates from water meters or the states of selected detectors. They can be upgraded at any time without affecting the existing calibration.

In addition to accumulated volumes and the volume on the reporting date, water-meter radio modules also store 15 months of values, battery operating

hours and housing openings. More recent models are password-protected and offer AES-128 data encryption.

Sontex' bidirectional radio system allows the parameterisation of the device as well as the reading of consumption values with a mobile reader, or directly from the accounting centre through a data concentrator in the building.



Supercom 580

For Elster's measuring capsule water meters. Bidirectional, scanning uses coils.



Supercom 581

For Wehrle Modularis water meters. Scanning also uses coils.



Supercom 582

For Elster's new water meters. Developed in response to popular demand.



Supercom 583

For Allmess' water meters, password-protected. Scanning uses three reflex switches.



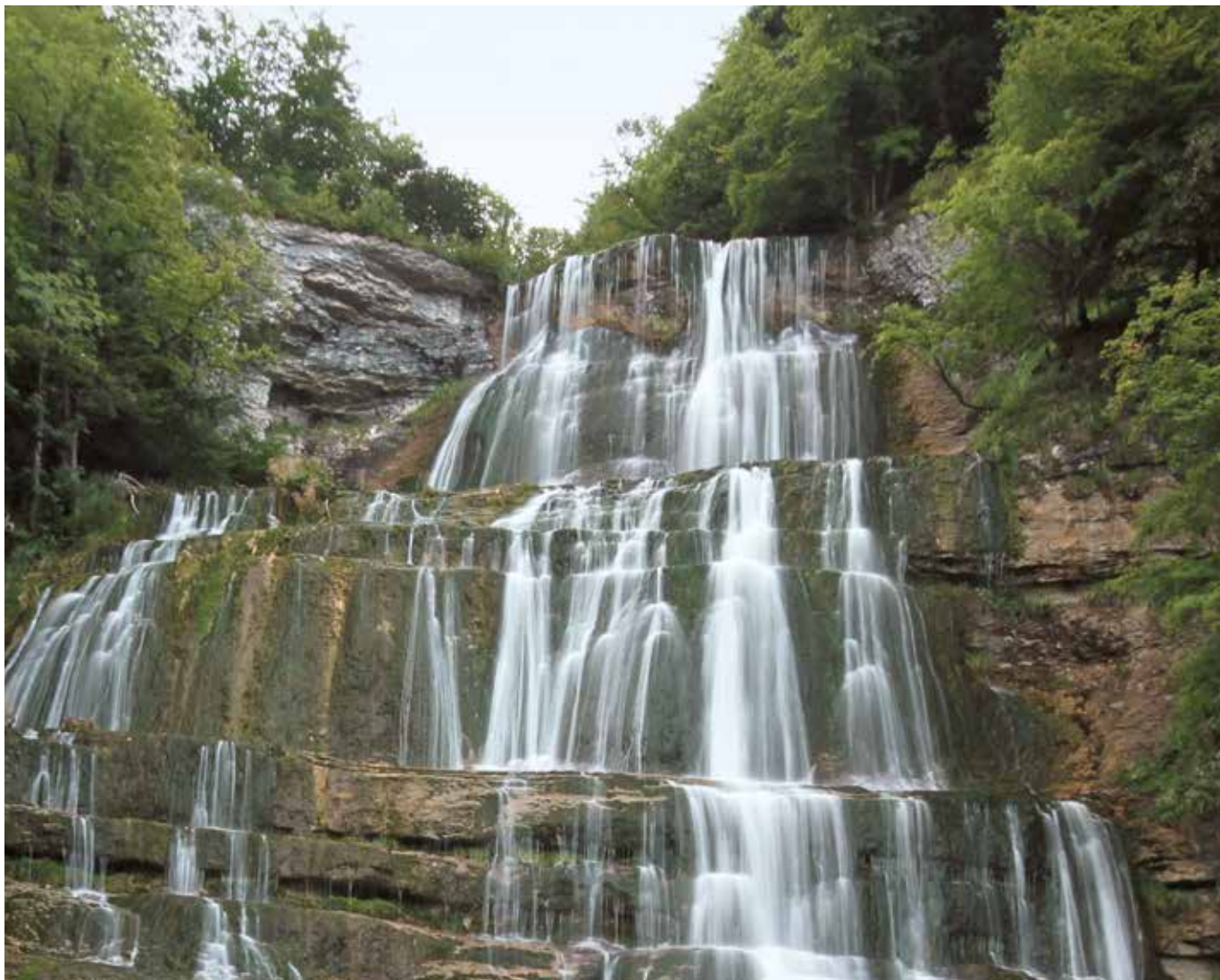
Supercom 587

For Wehrle Modularis. Standardised and unidirectional transmission using a wM-Bus. Can also be read by non-Sontex devices.



Supercom 323/327

For Ei Electronics smoke alarms. Indicates whether the alarm is fully functional and also monitors the dust level. It exists for two radio systems: Sontex or wM-Bus.



“Our radio modules meet customers’ needs for wireless solutions and for highly flexible data collection systems.”

Nebojsa Zivkovic, Product Manager

Sontex

Sontex SA

Rue de la Gare 27
2605 Sonceboz
Switzerland

Phone +41 32 488 30 00
Fax +41 32 488 30 01
sontex@sontex.ch

www.sontex.ch