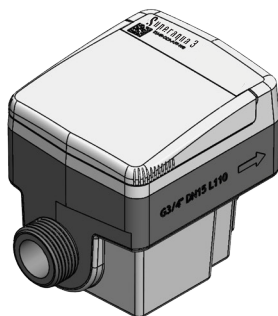


# Superaqua 3 Composite

Residential ultrasonic water meter  
Ultraschall-Wasserzähler für den Wohnbereich  
Compteur d'eau à ultrasons résidentiel  
Contatore d'acqua ad ultrasuoni residenziale

Installation guide  
Montageanleitung  
Instructions de montage  
Istruzioni di montaggio



 IP 68 EN60529	Humidity Luftfeuchtigkeit Humidité	 0-98% RH	Operating ambient temperature Umgebungstemperatur für den Gebrauch Température ambiante d'utilisation	 +55°C -10°C
----------------------	--	--------------	---	-----------------

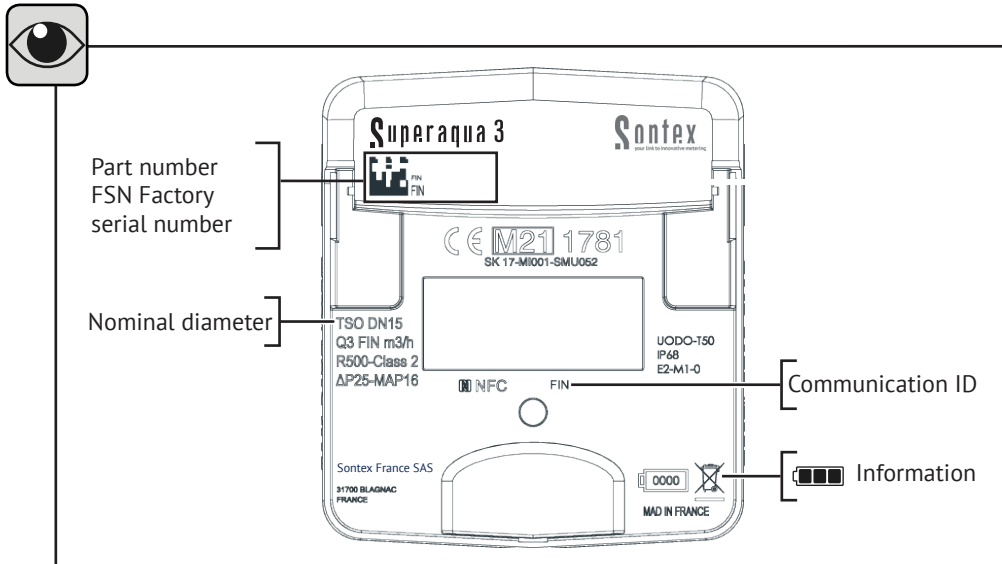
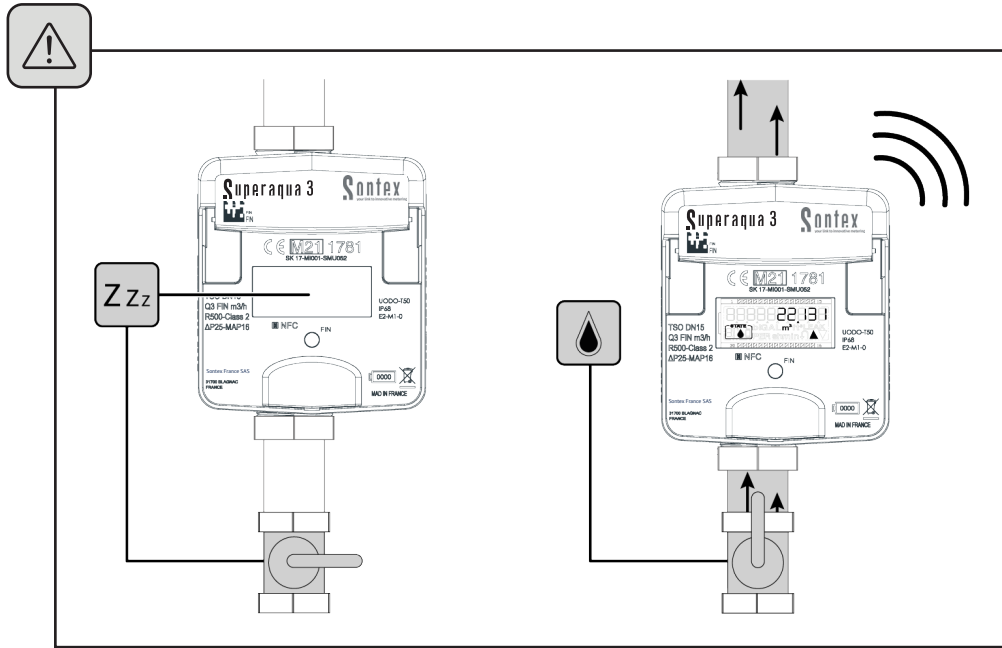
Storage/ transport temperature Temperatur bei Lagerung/ Transport Température de stockage/ transport		 [-10°C to 5°C] and [35°C to 70°C] for no more than 72 consecutive hours, and 4 cumulated weeks
--	--	---

**i** 868 MHz,  
LoRaWAN / Wireless M-Bus

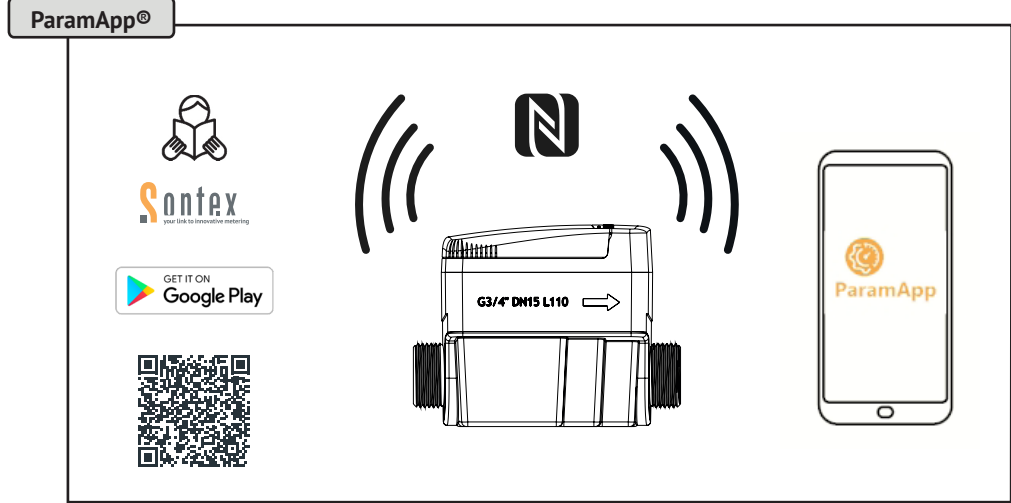
Specific disposal applies

 Torque: min. 3/4 " ; 15 N.m max. 1 " ; 30 N.m	

 Operating pressure Betriebsdruck Pression de service  Max: 16 Bar 	Operating water temperature Betriebswassertemperatur Température de fonctionnement de l'eau  Min: 0.1°C / Max: 50°C 
---	---



*\*Image for purposes of illustration only*



<b>i</b>	→ <a href="http://www.sontex.com">www.sontex.com</a>	Sontex France SAS 18 Avenue Escadrille Normandie-Niemen   31700 Blagnac   France Tel. +33 561 11 23 56
	<p>Guidelines:</p> <ul style="list-style-type: none"> <li>- Installation in vertical and horizontal positions possible</li> <li>- Limit the installation depth to guarantee good communication</li> <li>- No objects should be placed on the meter</li> <li>- The meter must not be installed on the ground</li> <li>- No holding by the housing of the meter during the installation</li> <li>- Once installed, the valve installed before the meter (if any) must be fully opened</li> </ul>	

Scan the QR code below to view the EU Declaration of Conformity (DoC):

[www.sontex.com](http://www.sontex.com)