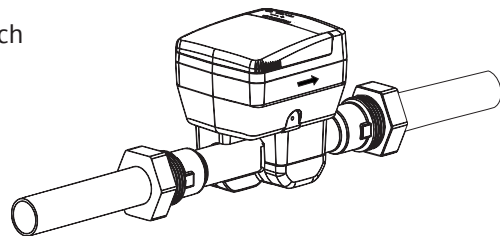


Superaqua 3

Residential ultrasonic water meter
 Ultraschall-Wasserzähler für den Wohnbereich
 Compteur d'eau à ultrasons résidentiel
 Contatore d'acqua ad ultrasuoni residenziale

Installation guide
 Montageanleitung
 Instructions de montage
 Istruzioni di montaggio



	TSO-W4 wM-Bus 434MHz
	TSO-W8 wM-Bus 868MHz
	TSO-LW LoRaWAN 868MHz
	TSO-LW8 MultiCom

1 Year Storage max.

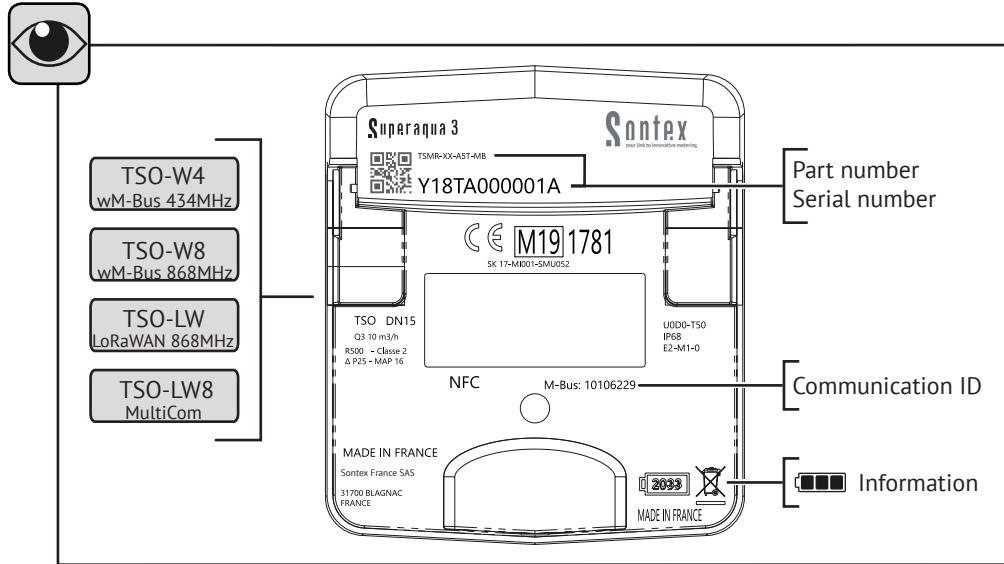
max. + 70°C / 158°F min. - 20°C / -4°F

Torque: min. 30 N.m, max. 50 N.m

Max: 16 Bar

Min: 0.1°C / 32°F
 Max: 50°C / 122°F

15 Years of Battery life



i

→ www.sontex.com

Sontex France SAS
18 Avenue Escadrille Normandie-Niemen |
31700 Blagnac | France
Tel. +33 561 11 23 56

Guidelines:

- Installation in vertical and horizontal positions possible
- Limit the installation depth to guarantee good communication
- No objects should be placed on the meter
- The meter must not be installed on the ground
- No holding by the housing of the meter during the installation
- Once installed, the valve installed before the meter (if any) must be fully opened

ParamApp®

ParamApp

GET IT ON
Google Play



Scan the QR code below to view the EU Declaration of Conformity (DoC):
www.sontex.com

